

S/M No. :DV1000S001

# Service Manual

DVD PLAYER

**Model:** DV-1000S  
DV-1100S  
DV-1200S  
DV-1300S  
DV-1400S  
DV-1350S  
DV-1450S  
DV-710S  
DV-760S

✓ **Caution**

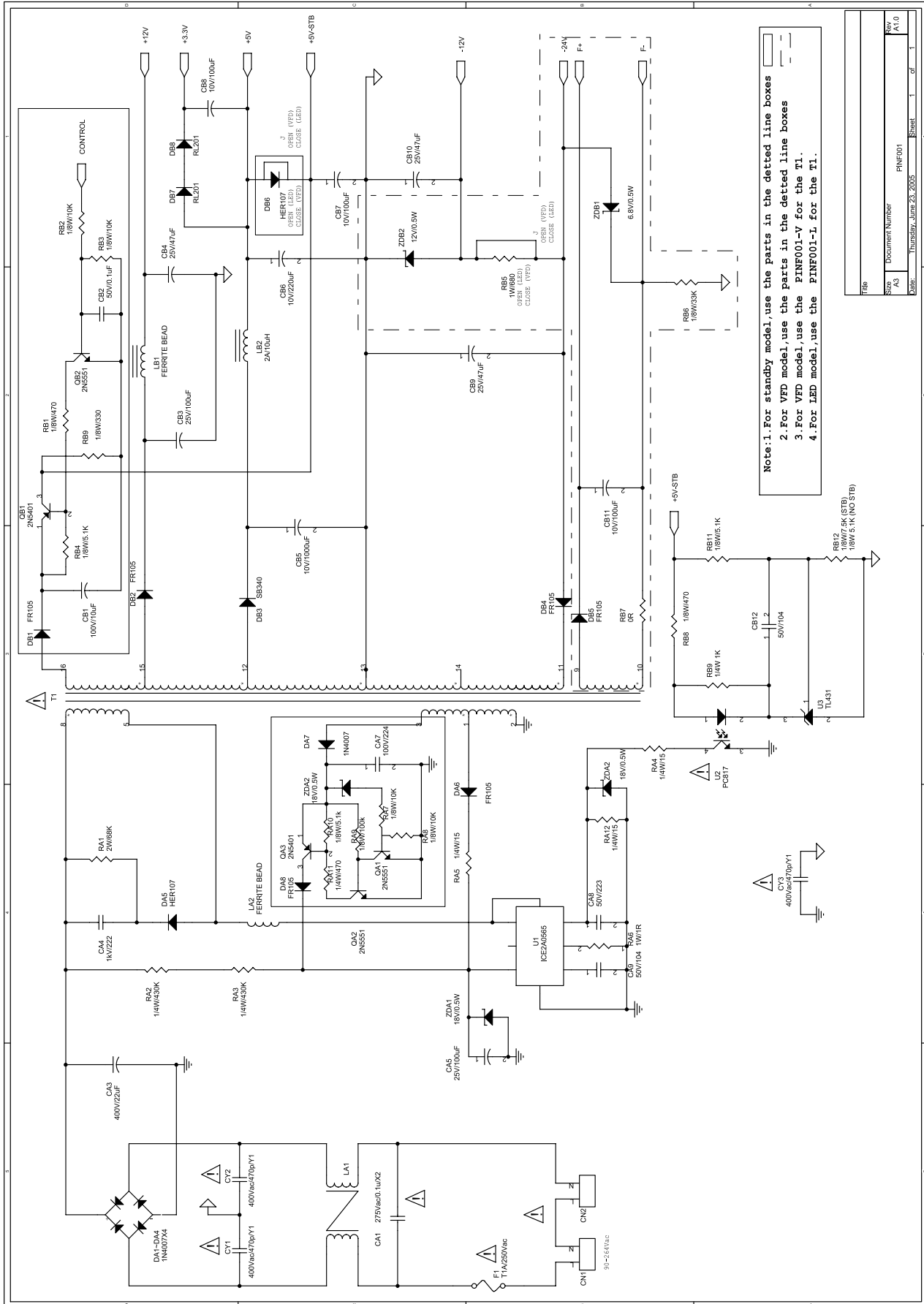
: In this Manual, some parts can be changed for improving, their performance without notice in the parts list. So, if you need the latest parts information, please refer to PPL(Parts Price List) in Service Information Center

**DAEWOO**   
ELECTRONICS

JAN. 2006

# CIRCUIT DIAGRAM

## 1. POWER SUPPLY SCHEMATIC DIAGRAM



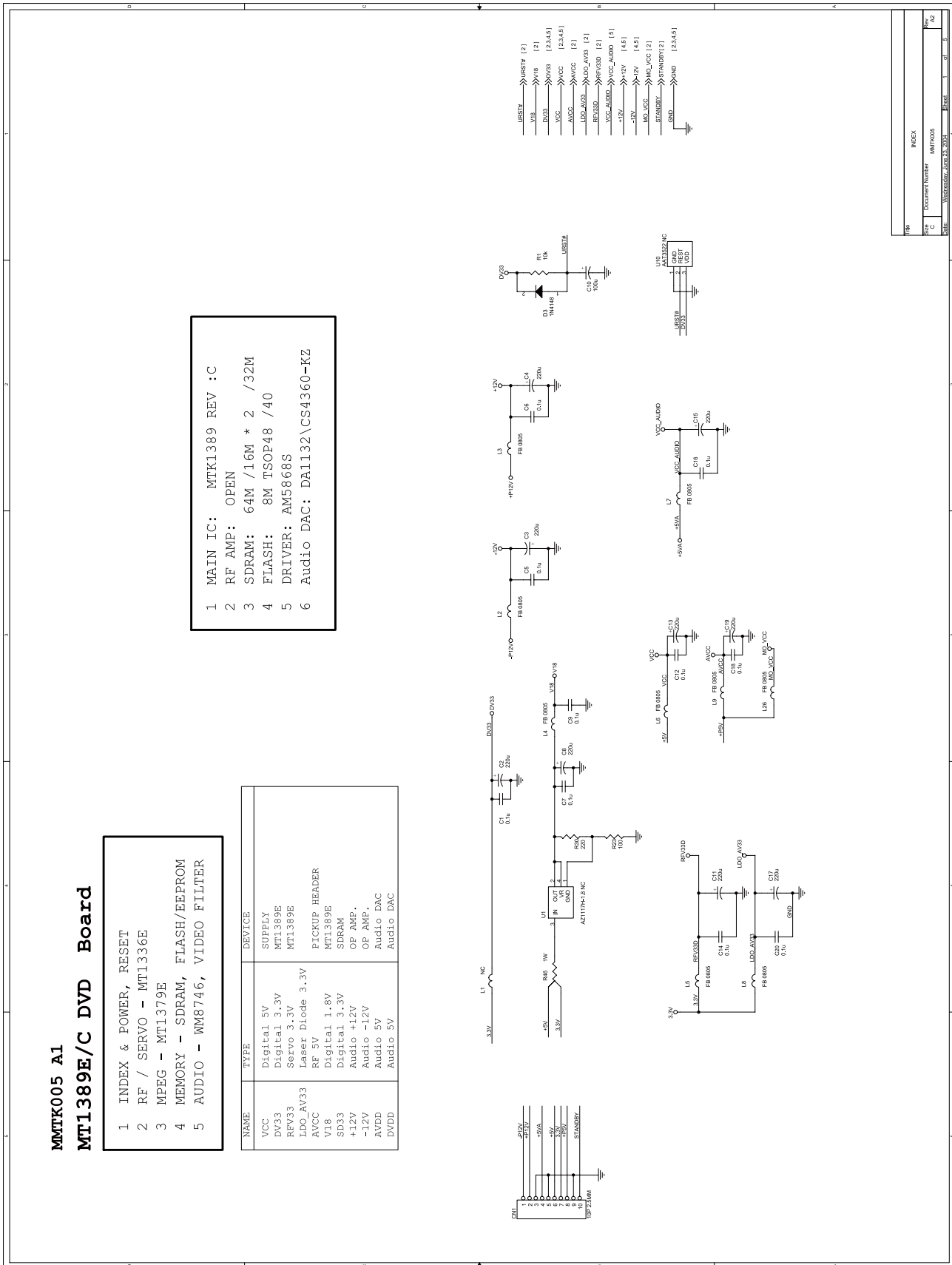
Note: 1. For standby model, use the parts in the dotted line boxes  
 2. For VFD model, use the parts in the detted line boxes  
 3. For VED model, use the PINF001-V for the T1.  
 4. For LED model, use the PINF001-L for the T1.

Title	Document Number	PINF001
Size	A3	A1.0
Drawn	Thursday, June 23, 2005	Sheet 1 of 1

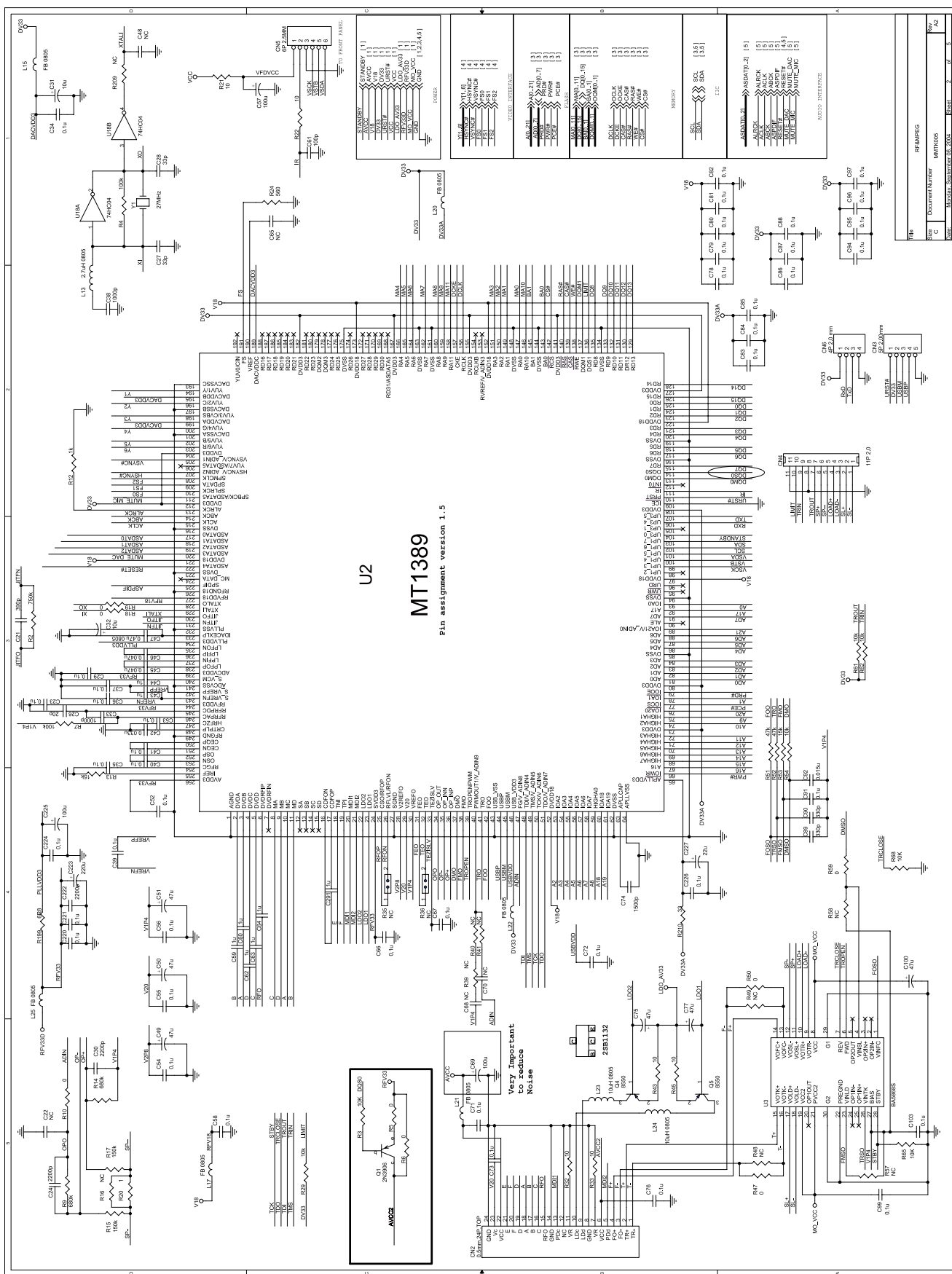
# CIRCUIT DIAGRAM

## 2. DECODE BOARD SCHEMATIC DIAGRAM

### 1) INDEX SCHEMATIC DIAGRAM



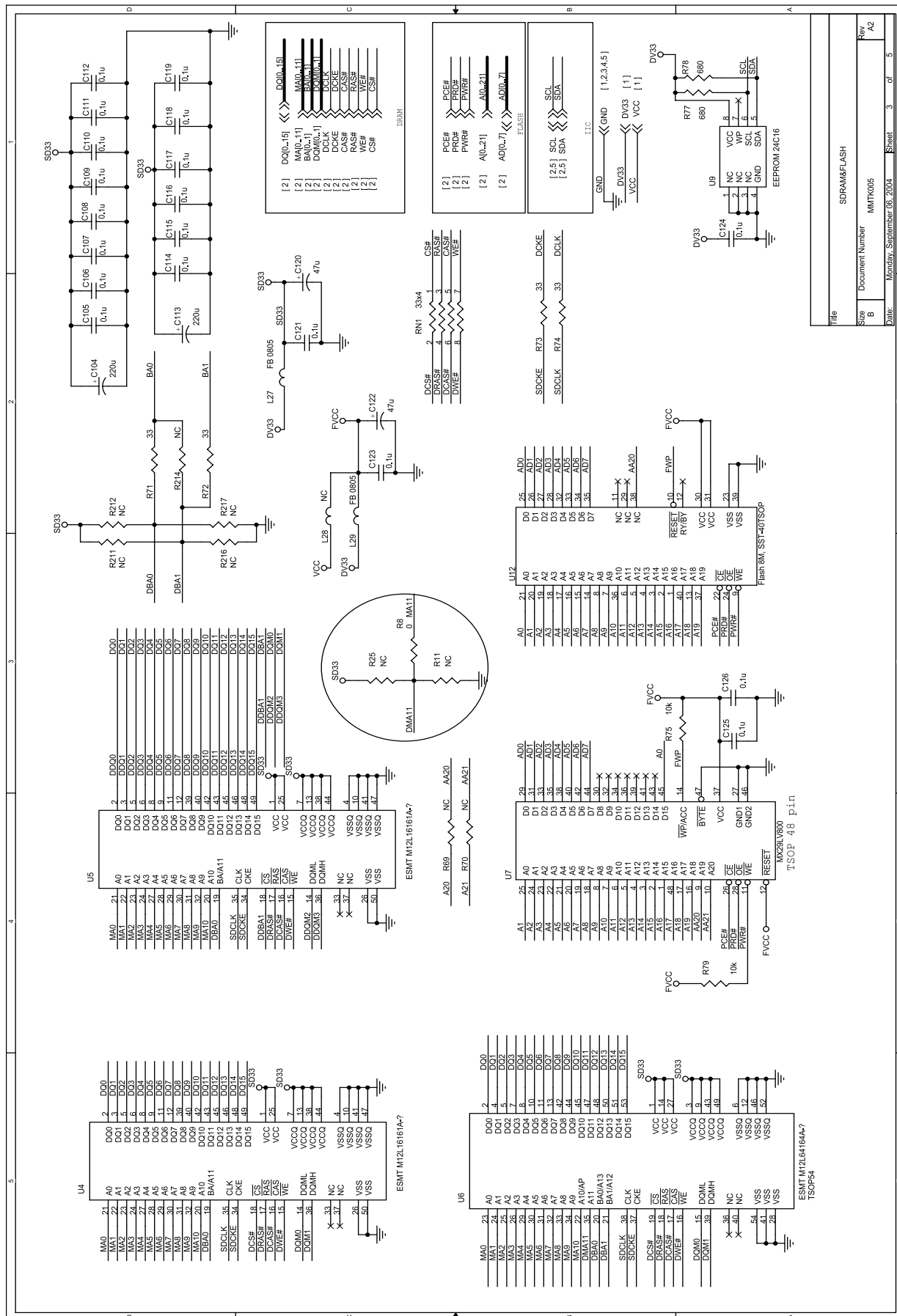
## 2) RF & MPEG SCHEMATIC DIAGRAM





# CIRCUIT DIAGRAM

## 3) SDRAM & FLASH SCHEMATIC DIAGRAM

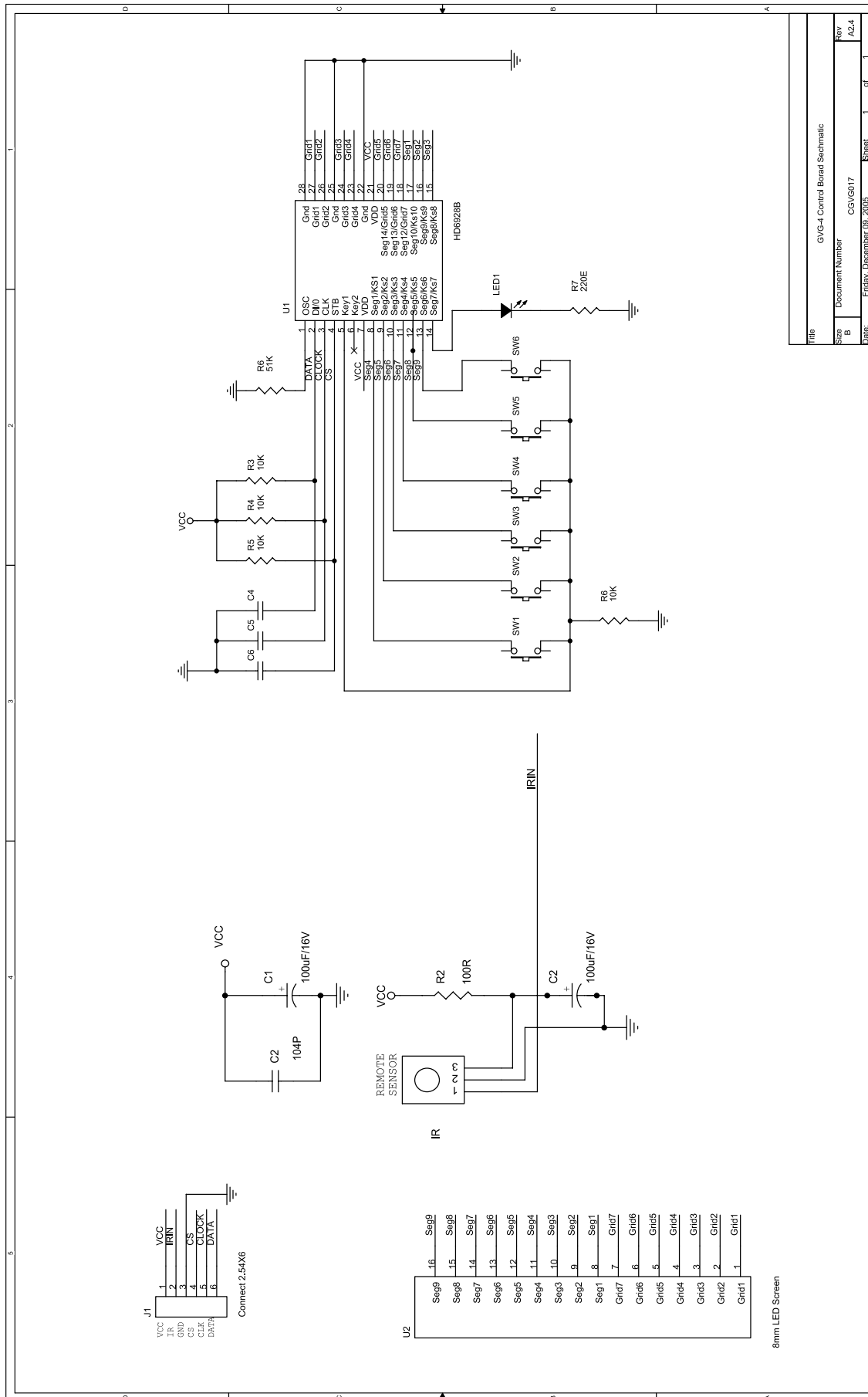


Title	SDRAM&FLASH		
Size	Document Number	MMTK005	Rev
B			A2
Date:	Monday, September 05, 2004	Sheet	3 of 5



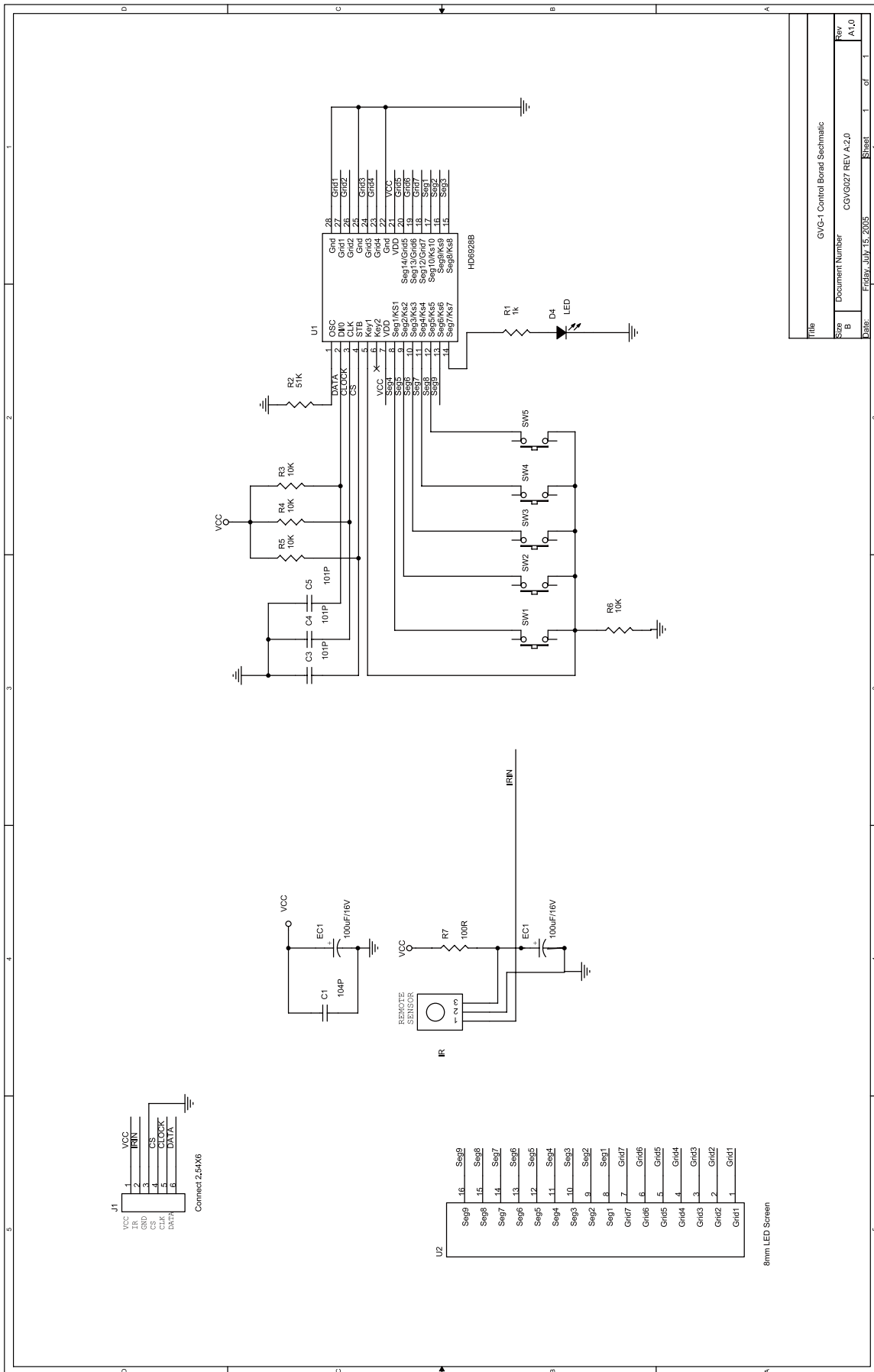


## 3. CONTROL BOARD SCHEMATIC DIAGRAM (DV-1000S/DV-1100S/DV-710S/DV-760S)



# CIRCUIT DIAGRAM

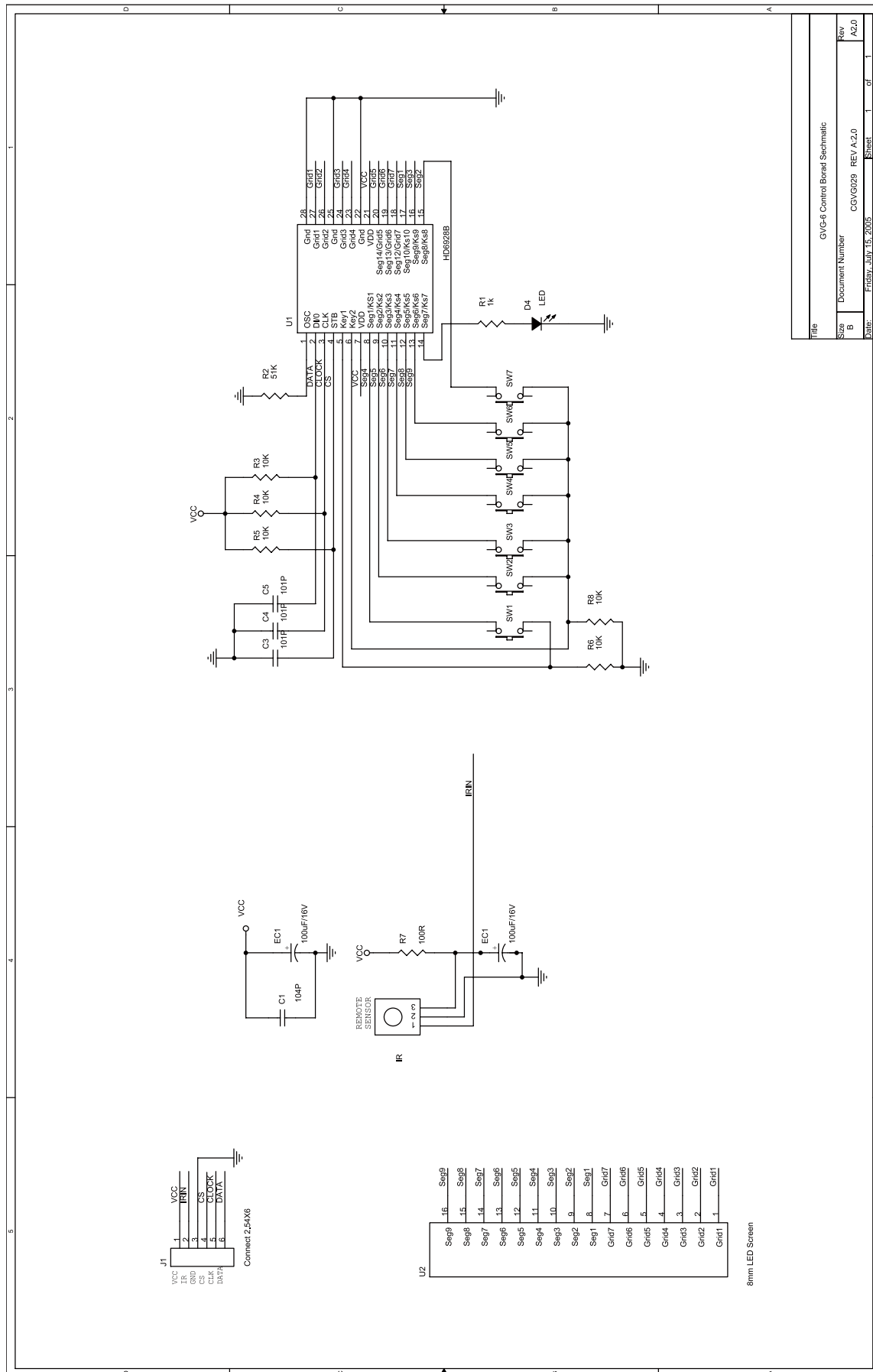
## CONTROL BOARD SCHEMATIC DIAGRAM (DV-1400S/DV-1450S)



Title	GVG-1 Control Board Schematic		
Size	B	Document Number	CGVG027 REV.A-2.0
Rev	A1.0	Date	Fri Dec 15 2005
Sheet	1	of	1

# CIRCUIT DIAGRAM

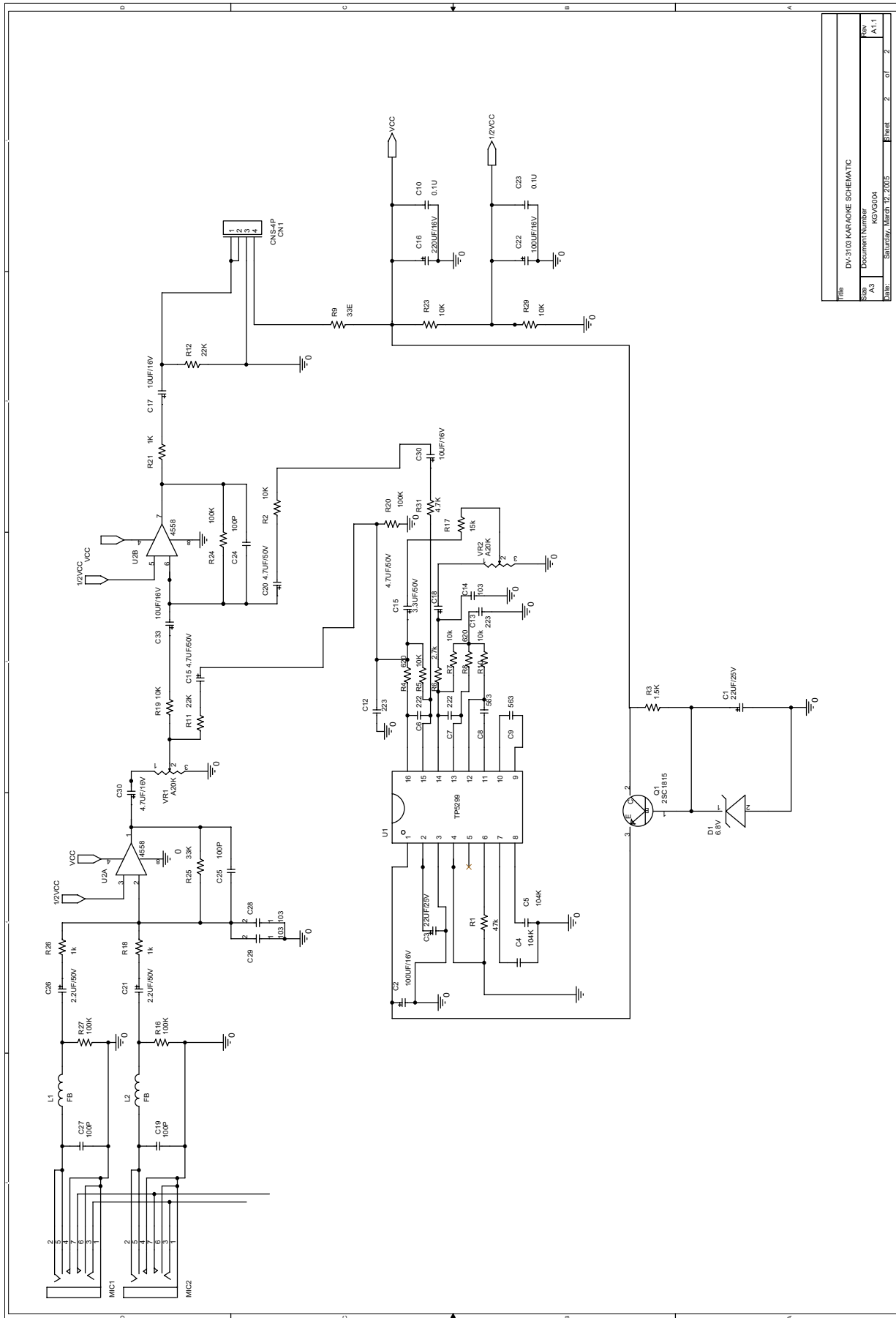
## CONTROL BOARD SCHEMATIC DIAGRAM (DV-1200S/DV-1300S/DV-1350S)



Title		GVC-E Control Board Schematic	
Size	B	Document Number	CGVG029 REV A2.0
Rev	A2.0	Date	Friday, July 15, 2005
Sheet	1	of	1

# CIRCUIT DIAGRAM

## 4. MICROPHONE BOARD SCHEMATIC DIAGRAM



File:	DV-3103 KARAOKE SCHEMATIC
Size:	Document Number
As:	KGW-0004
Date:	Saturday, March 12, 2005 Sheet 2 of 2